

Required Map 7: Recreation and Trails

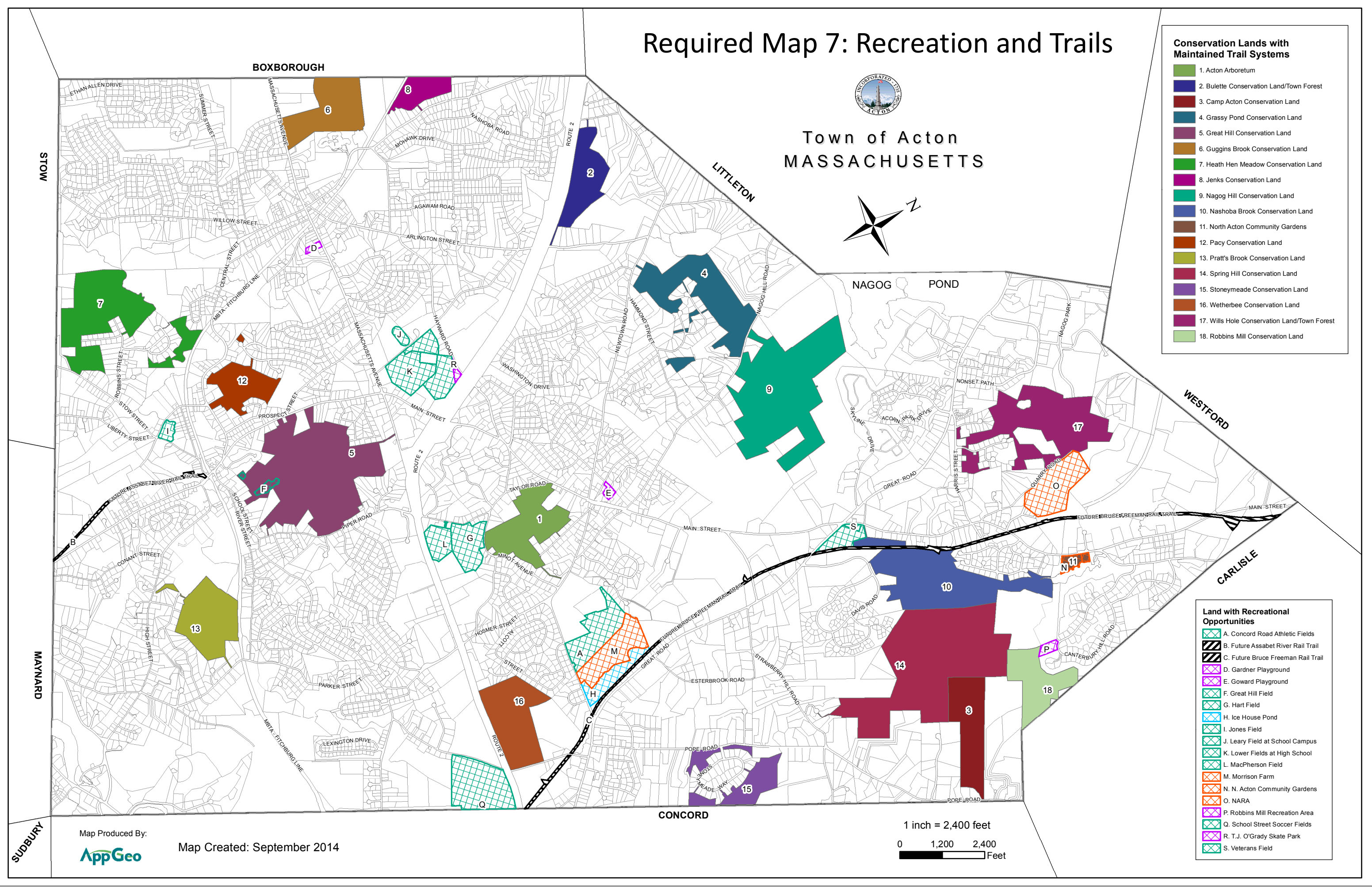


Town of Acton
MASSACHUSETTS



- Conservation Lands with Maintained Trail Systems**
- 1. Acton Arboretum
 - 2. Bulette Conservation Land/Town Forest
 - 3. Camp Acton Conservation Land
 - 4. Grassy Pond Conservation Land
 - 5. Great Hill Conservation Land
 - 6. Guggins Brook Conservation Land
 - 7. Heath Hen Meadow Conservation Land
 - 8. Jenks Conservation Land
 - 9. Nagog Hill Conservation Land
 - 10. Nashoba Brook Conservation Land
 - 11. North Acton Community Gardens
 - 12. Pacy Conservation Land
 - 13. Pratt's Brook Conservation Land
 - 14. Spring Hill Conservation Land
 - 15. Stoneymeade Conservation Land
 - 16. Wetherbee Conservation Land
 - 17. Wills Hole Conservation Land/Town Forest
 - 18. Robbins Mill Conservation Land

- Land with Recreational Opportunities**
- A. Concord Road Athletic Fields
 - B. Future Assabet River Rail Trail
 - C. Future Bruce Freeman Rail Trail
 - D. Gardner Playground
 - E. Goward Playground
 - F. Great Hill Field
 - G. Hart Field
 - H. Ice House Pond
 - I. Jones Field
 - J. Leary Field at School Campus
 - K. Lower Fields at High School
 - L. MacPherson Field
 - M. Morrison Farm
 - N. N. Acton Community Gardens
 - O. NARA
 - P. Robbins Mill Recreation Area
 - R. T.J. O'Grady Skate Park
 - S. Veterans Field



Map Produced By:



Map Created: September 2014

1 inch = 2,400 feet

