

Kiosk Design



Acton Land Stewardship Committee
Acton, Massachusetts

New Kiosk Design

The design goals are:

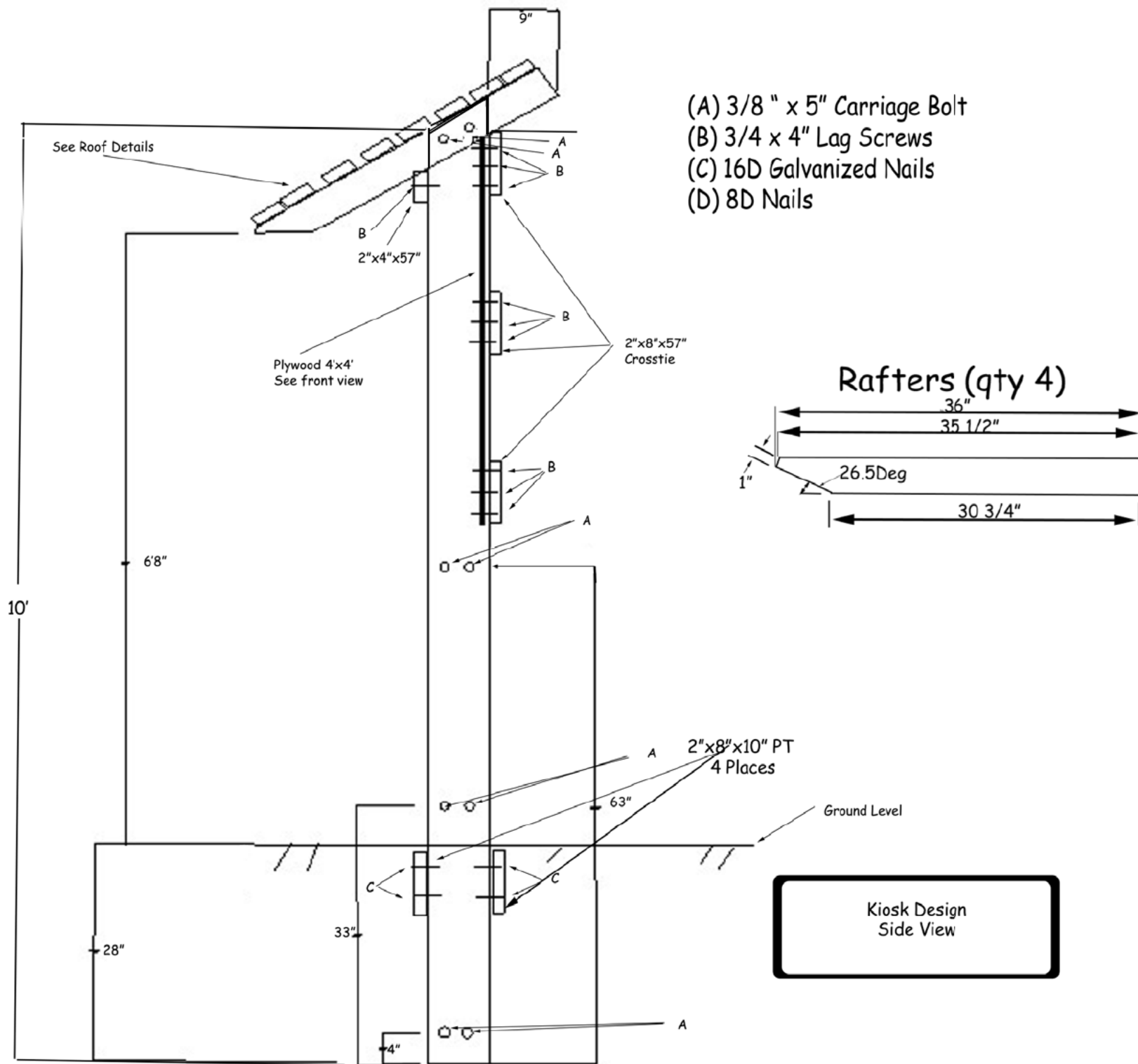
1. Lower cost.
2. Standard dimensional lumber.
3. Lower weight roof.
4. Recessed notice board.

Assembly Notes

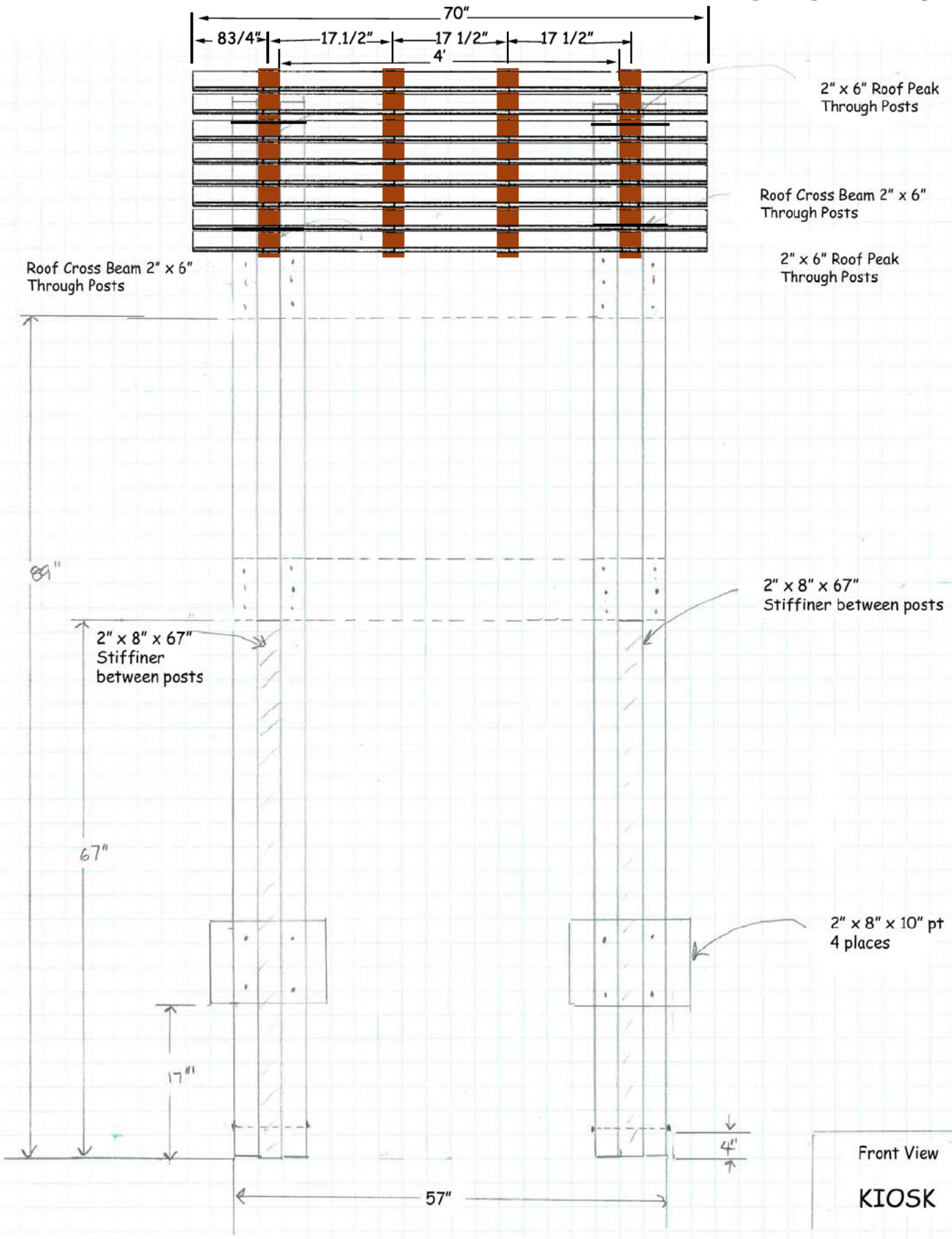
It will be convenient to make templates from cardboard from the designs provided to quickly locate hardware hole locations.

Before bolting the top crosstie to the vertical supports, clamp a roof rafter and 1/16" shims between both pairs of 10' uprights. This is to provide a little clearance for the outer roof rafters to slip between the upright supports when the roof is placed on the erected kiosk.

With two of the rafters so clamped nail the bottom and top roof sheathing to the rafters to set the spacing. The roof frame can then be removed and the remaining rafters and roof sheathing added. Once this is done the roof can be shingled with its drip edges.

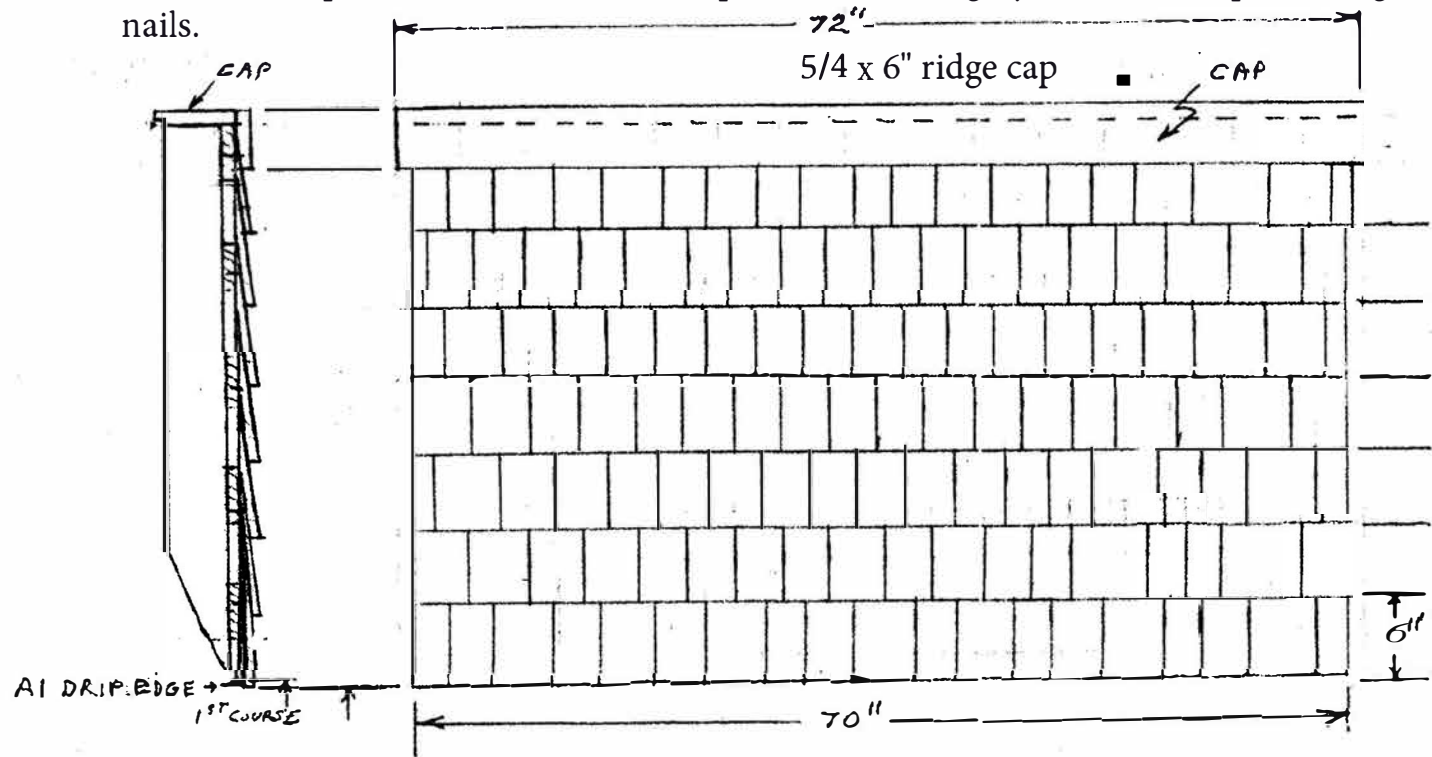


Mount 2" x 4" sheathing to rafters using (2) star screws (4 places per sheathing)



Front View
KIOSK

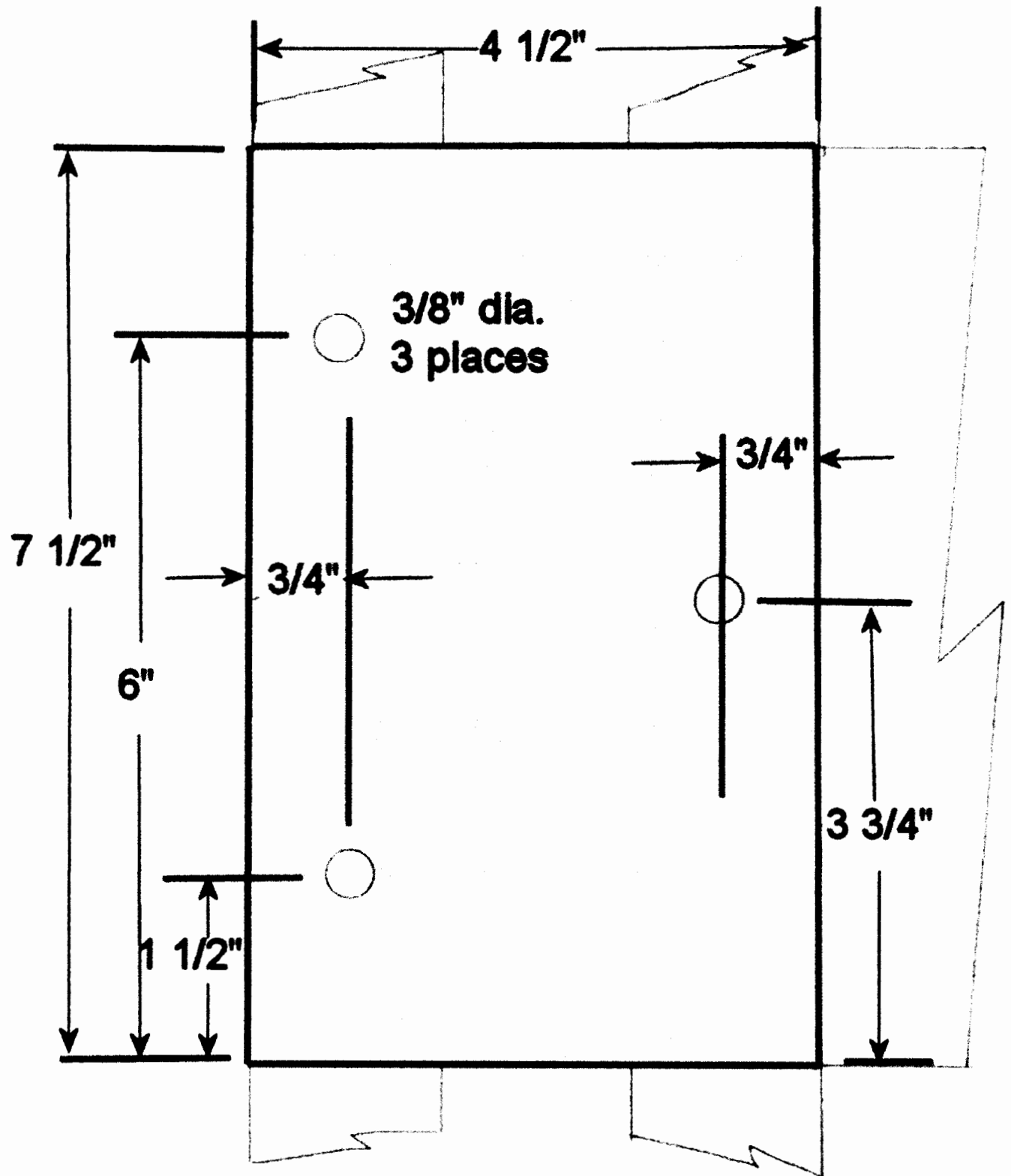
Nailing line should be 1 1/2" above the exposure. (6" exposure of shingle = 7.5 " nailing line.) Leave a small gap 3/8 " between shingles so shingles can expand when wet. Place course above previous course with a 1" space from a shingle joint. Don't expose shingle nails.



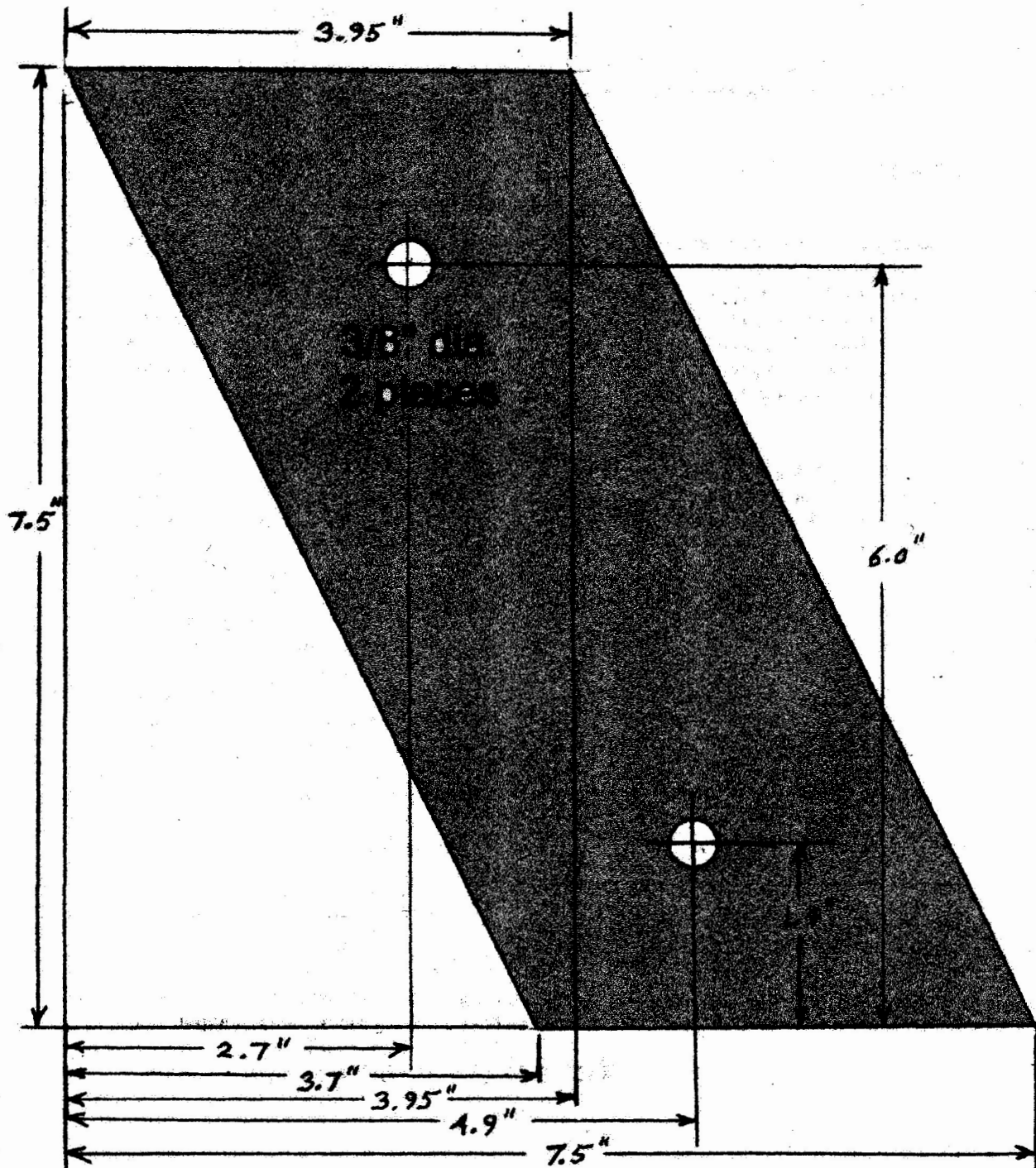
Roof Shingling
Not to scale

Start with brown drip edge, screw to sheathing at rafters. Apply 1st course flush to drip edge and top it with another course and nail on nail line. (1 1/2" above exposure (7 1/2"). After 1st course place a straight 5/4 x 6' ridge cap board 6" line to make a straight next course. Use a chalk line to make nailing line for accuracy before applying next course. Always make sure your nailing line falls near the center of the sheathing.

Crosstie Lag Screw Hole Template



Rafter Bolt Template



Kiosk Material List				
	Kiosk Design			
Quantity	Material	Unit Cost	Cost	Description
4	2"x8"x10' PT Pine			Posts
2	2" x 8" x 8' PT Pine			2- 67" stiffeners 4 10: deadmen
1	2" x 8" x 8' PT Pine			1 - 57" crosstie (behind panel)
1	2" x 8" x 10' PT pine			2 - 57" crossties (behind panel)
2	2"x4"x10' PT Pine			4- 36" rafters 1 - 57" cross tie
4	2" x 4" x 12' (Cut in (2) in half for sheathing),			8 - 2" x 4" x 6' PT sheathing (trim to 70")
1	3/8" x 4' x 4' CDX plywood			1/2 sheet 4'x4' cdx plywood
1	8" x10" A; brown drip edge			Drip edge cut to 6' length
1	box			Western red cedar siding
1	Ridge Cap 5/4" x 6" x 12' PT board			Cut in 1/2 for ridge cap
1	*Optional Copper flashing			6' x 6" (Wet area only mount under roof cap to reduce moss growth)
	Hardware			
12	3/8" x 5"			Hot Dipped Galvanized carriage bolts (for posts)
20	3/8" x 4"			Hot Dipped Galvanized lag screws
32	3/8"			Hot Dipped Galvanized flat washers
12	3/8"			Hot Dipped Galvanized hex nuts
15	1 1/2" - 12			Stainless Steel flat head screws (panel)
46	8d (2 1/2")			galvanized nails
20	16d (3 1/2")			galvanized nails
1 lb	4d (1 1/2")			stainless steel ring shank siding nails
1 box	3" Exterior Coated Star Screws			3" x 10 or 3.5" x 10 or 9 exterior screws T-25 star drive coated screws. Used in place of nails.